

iSpO<sub>2</sub><sup>™</sup>  
Pulse Oximeter



From the Leaders  
in Pulse Oximetry

For sports and aviation use.  
Not intended for medical use.

## Quick Steps

---

**1**

Connect iSpO<sub>2</sub> Device



**2**

Place Sensor on Finger



**3**

Test!

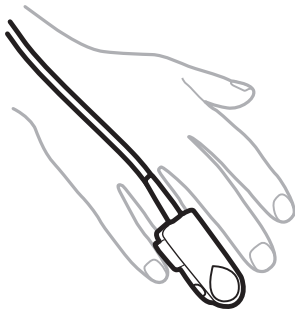
99

75

2.0

## How to Put on the Clip

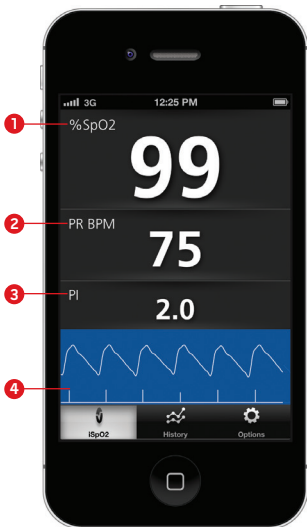
---



Place sensor on the middle or ring finger of your non-dominant hand with the nail side up

## iSpO2 – Measurements

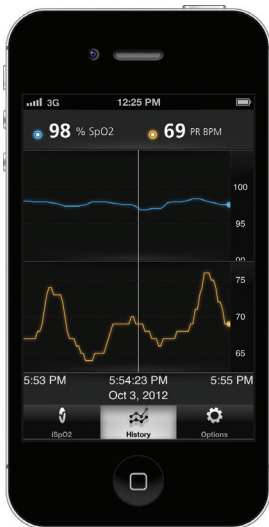
---



- 1 %SpO2, Blood oxygenation saturation
- 2 BPM, Pulse rate
- 3 PI, Perfusion index
- 4 SIQ, Signal quality bar

## Your Data History

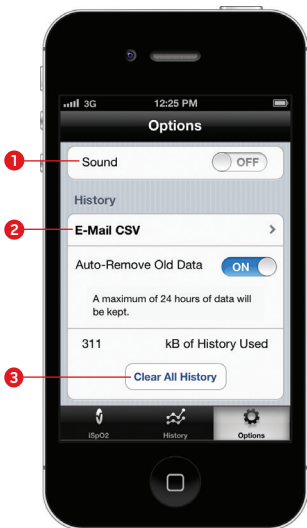
---



- > Click on history to view your SpO2 and PR measurements over time

## Options

---



## E-mail My History

---



- 1 Turn the sound on/off
- 2 E-mail your measurements in a .CSV format
- 3 Clear your measurement data history

- > After selecting "E-Mail CSV" from the Options tab, share your measurements through e-mail

## Learn More. Get Support.

---

- > Learn more about the iSpO<sub>2</sub> features and pulse oximetry at [www.iSpO2.com](http://www.iSpO2.com)
- > For downloadable versions of the Quick Start Guide or Manual visit [www.iSpO2.com](http://www.iSpO2.com)
- > Contact customer service at [TechSupport-US@masimo.com](mailto:TechSupport-US@masimo.com) or call 877-964-8378
- > To learn more about Masimo's technology, visit [www.masimo.com](http://www.masimo.com)

